

HBS6200 CHEMISCOPE SYSTEM



Product highlight :-

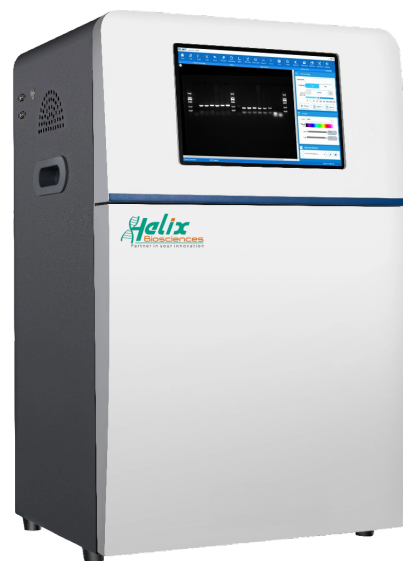
- **High resolution and high sensitivity cooled CCD camera**
Detecting very low abundance proteins with high level of details
- **F/0.8 large aperture autofocus lens**
Ensuring sufficient light intake even under low light conditions
- **Modular design with extendable capabilities**
Optional blue/white/UV light transilluminator and fluorescent module according to your needs
- **Colored Marker**
Helpful to estimate the size of the detected proteins
- **Intuitive image capture and analysis software**
Helping researchers obtain images and analysis results accurately and quickly, improving experimental efficiency

Product Introduction :-

When conducting Western blot experiments using traditional methods, the final step requires ECL detection in a darkroom. Creating a darkroom not only wastes space but also involves complex exposure processes and handling toxic chemicals for X-ray film development.



HBS6200 CHEMISCOPE SYSTEM



The ChemiScope 6000 Chemiluminescence and Fluorescence Imaging System, with its high-sensitivity camera, intuitive interface, and user-friendly design, eliminates the need for a darkroom and makes chemiluminescent detection easy and straightforward.

Product Application :-

Chemiluminescence detection

Detection of chemiluminescence samples based on ECL, ECL PLUS, etc., such as membranes labeled with Western Blot, Northern Blot, Southern Blot;

Protein Detection

Coomassie brilliant blue staining and silver staining protein gel;

Nucleic acid detection

DNA/RNA detection of various nucleic acid dyes, such as Ethidium Bromide, Gel Signal Red, Gel Signal Green, SYBR Gold, SYBR Green, SYBR Safe, Gel Star, etc.

Fluorescence detection

FAM, Cy2, Cy3, Cy5, GFP and other fluorescent dyes and fluorescent protein detection.



sales@helixbiosciences.com



www.helixbiosciences.com



+91-11-41613622
1800-890-4669

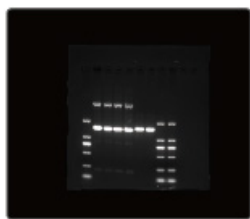
REGISTERED OFFICE :-

A-7, SOUTH WEST DELHI, NARAINA INDUSTRIAL AREA PHASE 1, NEW DELHI - 110028

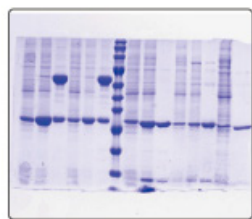
MANUFACTURING :-

PLOT NO. 360, IMT INDUSTRIAL ESTATE, SECTOR 68, FARIDABAD, HARYANA - 121004

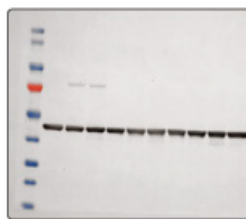
HBS6200 CHEMISCOPE SYSTEM



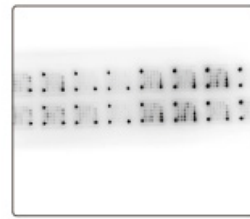
01.
Nucleic acid gel



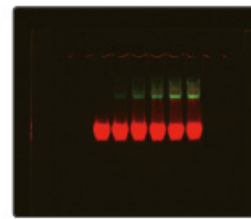
02.
SDS/PAGE gel imaging



03.
Western Blot
chemiluminescence



04.
Protein chip

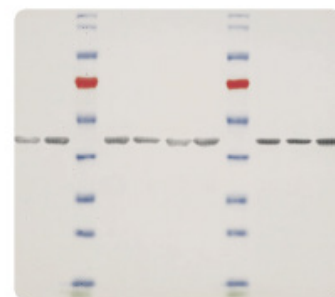


05.
FAM-Cy5 fluorescence

Product Feature :-

**Auto overlay of
colored Marker and
chemiluminescence image**

Enabling easy determination of target band sizes during imaging. This significantly improves multi-band identification efficiency while delivering visually optimized results.



sales@helixbiosciences.com



www.helixbiosciences.com

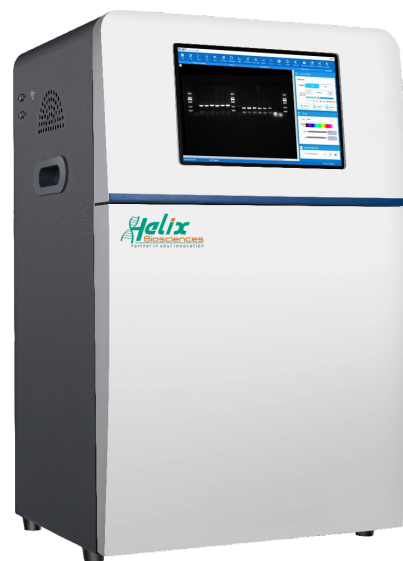


+91-11-41613622
1800-890-4669

REGISTERED OFFICE :-
MANUFACTURING :-

A-7, SOUTH WEST DELHI, NARAINA INDUSTRIAL AREA PHASE 1, NEW DELHI - 110028
PLOT NO. 360, IMT INDUSTRIAL ESTATE, SECTOR 68, FARIDABAD, HARYANA - 121004

HBS6200 CHEMISCOPE SYSTEM



Product Feature :-

UV Transilluminator (Optional)

Equipped with a professional gel-cutting safety shield for nucleic acid gel imaging and excision. Features high-quality LED light source with superior uniformity and a lifespan of >30,000 hours. UV illumination area: 21cm × 26cm.



UV Transilluminator (Optional)

470nm LED light source, used for DNA/RNA gel detection under blue light. Blue light illumination area: 21cm*26cm.

White light sample tray (optional)

LED light source, used for Coomassie and silver-stained protein gels. White light illumination area: 21cm*26cm.

Fluorescence Module (Optional)

8-position motorized filter wheel with customized wavelength filters for multicolor fluorescence imaging from UV to visible and near-infrared spectra.

Control Method

Touchscreen/external computer with one-key switching, accommodating different user operating preferences.



sales@helixbiosciences.com



www.helixbiosciences.com



+91-11-41613622
1800-890-4669

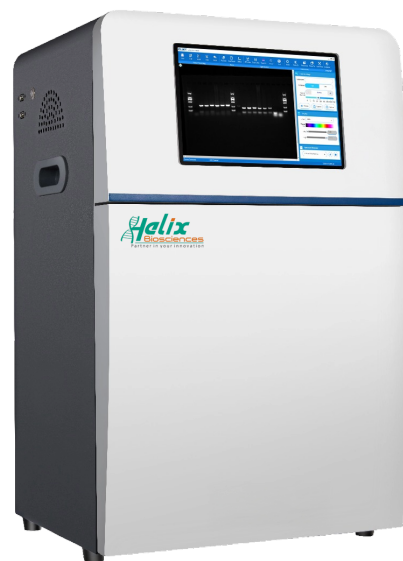
REGISTERED OFFICE :-

A-7, SOUTH WEST DELHI, NARAINA INDUSTRIAL AREA PHASE 1, NEW DELHI - 110028

MANUFACTURING :-

PLOT NO. 360, IMT INDUSTRIAL ESTATE, SECTOR 68, FARIDABAD, HARYANA - 121004

HBS6200 CHEMISCOPE SYSTEM



ChemiScope Imaging Capture and Analysis Software :-

ChemiScope Imaging Capture and Analysis Software offers image acquisition, analysis, and audit trail functions. It integrates camera control, light source adjustment, and lens settings, supporting chemiluminescence, fluorescence, protein gel, and nucleic acid gel imaging. The software also includes a multi-level account management system for user control.

Developed independently by our company, ChemiScope Imaging Capture and Analysis Software is protected by intellectual property rights.

ChemiScope Image Capture Software :-

- Auto-exposure function. Just one click, the optimum gel image is captured and automatically saved.
- Shooting function: 1-99 frames grayscale accumulation, time accumulation, customized time series shooting.
- Automatically capture image of the colored molecular weight marker and automatic overlay it with the chemiluminescence image.
- Pixel Binning: 1*1, 2*2, 3*3, 4*4.
- Image rotation, crop, reverse color, add pseudocolor and other image optimization processing.
- The report can be exported in PDF format with the account and shooting info.



sales@helixbiosciences.com



www.helixbiosciences.com



+91-11-41613622
1800-890-4669

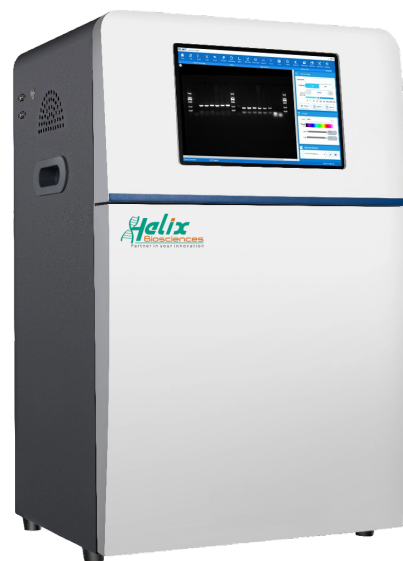
REGISTERED OFFICE :-

A-7, SOUTH WEST DELHI, NARAINA INDUSTRIAL AREA PHASE 1, NEW DELHI - 110028

MANUFACTURING :-

PLOT NO. 360, IMT INDUSTRIAL ESTATE, SECTOR 68, FARIDABAD, HARYANA - 121004

HBS6200 CHEMISCOPE SYSTEM



- Batch export images in TIFF, JPG and other formats.

ChemiScope Image Analysis Software :-

- Automatically identify electrophoretic bands, delete and adjust bands.
- Automatically calculate the molecularweight of each bands
- Automatically calculate band grayscale values, suitable for quantitative analysis.
- Automatically subtract the background mode to get accurate and optimized image analysis data.
- The analysis result canbe exported to Excel File.

Audit Trail Function :-

The software provides multi-level account rights management functions, electronic signature function and log query function for easy management of user accounts and data security. The PDF report can be output with account information, image original information and electronic signature.



sales@helixbiosciences.com



www.helixbiosciences.com



+91-11-41613622
1800-890-4669

REGISTERED OFFICE :-

A-7, SOUTH WEST DELHI, NARAINA INDUSTRIAL AREA PHASE 1, NEW DELHI - 110028

MANUFACTURING :-

PLOT NO. 360, IMT INDUSTRIAL ESTATE, SECTOR 68, FARIDABAD, HARYANA - 121004

HBS6200 CHEMISCOPE SYSTEM



Specification :-

Parameter	ChemiScope 6200Touch
Camera	6 megapixels, 2688*2200
Grayscale	16 bit (65536 levels)
Binning	1*1, 2*2, 3*3, 4*4
Camera cooling	-30°C
Lens	F/0.8 large aperture High-resolution motorized autofocus lens
Touch-screen	Built-in 10.1-inch touch screen
Maximum image area	16cm*19cm
Sample Stage	Bilayer
UV transilluminator (Optional)	For nucleic acid gel imaging, 302nm, 254nm, 365nm are optional, transmission area 21cm*26cm
Blue light sample tray (Optional)	For imaging nucleic acid gel labeled with nucleic acid dye suitable for blue light excitation, wavelength 470nm, transmission area 21cm*26cm



sales@helixbiosciences.com



www.helixbiosciences.com



+91-11-41613622
1800-890-4669

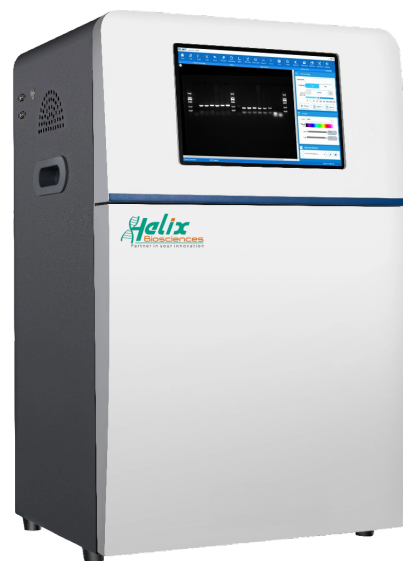
REGISTERED OFFICE :-

A-7, SOUTH WEST DELHI, NARAINA INDUSTRIAL AREA PHASE 1, NEW DELHI - 110028

MANUFACTURING :-

PLOT NO. 360, IMT INDUSTRIAL ESTATE, SECTOR 68, FARIDABAD, HARYANA - 121004

HBS6200 CHEMISCOPE SYSTEM



Specification :-

Parameter	ChemiScope 6200Touch
White light sample tray (Optional)	For protein gel imaging such as coomassie brilliant blue gel, silver staining gel etc, transmission area 21cm*26cm
Epi fluorescent light source (Optional)	For fluorescent samples imaging Monochromatic LED light source, up to 5 sets loaded at the same time. Wavelength: 365nm, 470nm, 530nm, 630nm, 660nm, 730nm
Filters (Optional)	Wavelength: 460nm, 525nm, 585nm, 690nm, 715nm, 810nm
Software	ChemiScope Capture and Analysis software
Operating condition	Operating temperature: 15°C-30°C, operating humidity: 20%-70%
Storage condition	Storage temperature: 5°C-40°C, storage humidity: 10%-80%
Input voltage	220V AC, 50/60Hz
Power	≤150W
Dimension	435mm*395mm*700mm(W*D*H)

