



Popular Custom Antibody Packages

Package	Service Content	Final Products	Price	Time
Polyclonal Package 1 (from protein antigen to anti-serum)	• Detection for protein purity and concentration • Animal immunization • Blood collection • ELISA titration	• 1-2ml pre-bleed • 40-60ml anti-serum • ELISA data • Complete project report (COA)	\$575	10-12 weeks
Polyclonal Package 4 (from antigen design to antigen affinity purification)	• Antigen design and synthesis (12-22aa, 85%) • Peptide conjugation • Animal immunization and serum collection • ELISA titration • Antigen affinity purification	• 2-3mg antigen peptide • 1-2ml pre-bleed • 2-5mg antigen affinity purified antibody • ELISA and dot blot data • Complete project report (COA)	\$1015	12-15 weeks
Polyclonal Package 8 (from cDNA to antigen affinity purified antibody)	• Construction of expression vectors • Protein expression and purification • Animal immunization and serum collection • ELISA titration • Antigen affinity purification	• Expression vector • 1mg purified protein • 1-2ml pre-bleed • 2-5mg antigen affinity purified antibody • ELISA and dot blot data • Complete project report (COA)	\$1850	14-16 weeks
Polyclonal Package 9 (Phospho-specific polyclonal antibody)	• Antigen design and synthesis (12-22aa, 85%) • Peptide conjugation • Animal immunization and serum collection • ELISA titration • Antigen affinity purification	• 2-3mg antigen peptide (non-and phospho-peptides) • 1-2ml pre-bleed • 2-5mg non-specific antibody and phospho-specific antibody • ELISA and dot blot data • Complete project report (COA)	\$1900	13-16 weeks
Monoclonal Package 2 (from antigen design to antigen affinity purification)	• Antigen design and synthesis (12-22aa, 85%) • Peptide conjugation • Animal immunization and serum collection • ELISA titration • Hybridoma generation • IgG isotype determination • Ascites production • Antibody affinity purification (2 hybridoma strains)	• 2-3mg antigen peptide • 50µl (1:10 diluted) pre-bleed • 2-5 hybridoma strains • 2-5mg antigen affinity purified antibody (from ascites) • ELISA and dot blot data • Complete project report (COA)	\$4850	20-26 weeks
Monoclonal Package 5 (Phospho-specific monoclonal antibody)	• Antigen design and synthesis (12-22aa, 85%) • Peptide protein conjugation • Animal immunization and serum collection • ELISA titration • Hybridoma generation • IgG isotype determination • Ascites production • Antibody affinity purification (2 hybridoma strains)	• 2-3mg antigen (non-phospho and phospho-) peptide • 50µl (1:10 diluted) pre-bleed • 2-5 hybridoma strains • 2-5mg non-specific antibody (purified from ascites) • 2-5mg phospho-specific antibody (purified from ascites) • ELISA and dot blot data • Complete project report (COA)	\$6175	21-26 weeks
Other Packages	Please visit our website or contact our sales department.		Quote	Quote
Individual Services	Please visit our website or contact our sales department.		Quote	Quote

Address: 519 Zi Yue Road, Shanghai 200241, China
Tel: 86-21-61263333
E-mail: glsyn@mail.online.sh.cn
Website: www.glschina.com



Why Choose GL's Antibody Service?

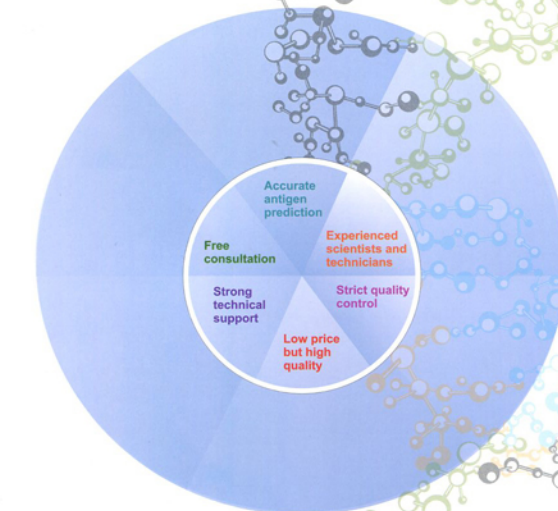


Figure 1. Western Blot using GL's custom generated antibody.

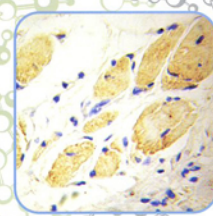


Figure 2. Immunohistochemical staining of paraffin-embedded tissue by GL's antibody.

Address: 519 Zi Yue Road, Shanghai 200241, China
Tel: 86-21-61263333
E-mail: glsyn@mail.online.sh.cn
Website: www.glschina.com



Other Products and Services

Peptides	Peptide Synthesis Reagents	Amino Acids	Custom peptide synthesis
from generic peptide to cGMP peptides. We have over 5000 catalog peptides in stock.	coupling and labeling reagents, linkers for solid phase synthesis, N-protecting reagents, Wang resin, 2-chlorotriyl-chloride-resin, etc.	amino acids and their derivatives, unusual amino acids, Boc-amino acids, Fmoc-amino acids, N-methyl-amino acids, Z-amino acids, etc.	We can also synthesize peptides from small scale (mg) to large scale (kg), linear to cyclized, long sequences (up to 1400AA), different purity levels (desalted, from >75% to >99%), wide range of modifications (phosphorylated, methylated, disulfide bridge, etc.) and labeling (biotin, FITC, 5-FAM, rhodamine, etc.).

Please visit our website for more information and pricing. You can also contact our sales department or distributors.

Selected Citations

1. A. Song et al., *J Cell Sci*, 123, 2228 (2010).
2. Z. Zhang, Y. Lai, L. Yu, J. Ding, *Biomaterials* 31, 7873 (2010).
3. Y. Wang, C. Liu, D. Yang, H. Yu, Y.-C. Liu, *Mol. Cell* 37, 112 (2010).
4. H.-B. Wang et al., *PNAS* 107, 13117 (2010).
5. S. Wakabayashi, T. Y. Nakamura, S. Kobayashi, T. Hiramatsu, *J. Biol. Chem.* 285, 26652 (2010).
6. M. van der Zee, J. W. van den Berg, C. van Holten-Neelen, W. A. Dek, *J. Immunol.* 185, 5066 (2010).
7. M. Takahashi et al., *J. Exp. Med.* 207, 29 (2010).
8. T. Sherrin et al., *J. Neurosci.* 30, 13348 (2010).
9. Z. Kuang et al., *J. Cell Biol.* 190, 129 (2010).
10. T. Inui, K. Sagon, J. Arii, Y. Kawaguchi, *J. Virol.* 84, 153 (2010).
11. F. Huang, Z.-G. He, *Nucleic Acids Res.*, ghy737 (2010).
12. B. T. Gault et al., *EMBO J* 29, 1069 (2010).
13. S. Song et al., *FASEB J* 23, 1396 (2009).
14. H. Keshishian et al., *Mol. Cell. Proteomics* 8, 2339 (2009).
15. T. Kaufmann et al., *Immunology* 38, 56 (2009).
16. L.-E. Fallang et al., *Nat. Immunol.* 10, 1096 (2009).
17. F.-X. Ding et al., *Hepatology* 49, 1492 (2009).
18. A. L. Barnard, A. P. Chikley, C. C. Bernard, R. L. Boyd, *Blood* 113, 204 (2009).
19. A. Rodriguez-Gonzalez et al., *Oncogene* 27, 7201 (2008).
20. X. He et al., *Cancer Res.* 68, 8678 (2008).
21. S. Dai et al., *Mol. Ther.* 16, 762 (2008).
22. R. T. Szymanski et al., *J. Bacteriol.* 189, 1441 (2007).
23. R. Srinivasan, J. H. S. Li, K. A. Katsch, S. Q. Yao, *Nat. Protoc.* 2, 2855 (2007).
24. X. Ren et al., *Cell Death Differ.* 14, 2076 (2007).
25. J. Wyszczka, *Methods* 40, 339 (2006).
26. H. Chai et al., *Plant Physiol.* 142, 1039 (2006).
27. J. V. Zhang et al., *Science* 310, 956 (2005).
28. H. Yang et al., *PLoS Biol.* 3, e134 (2005).
29. J. Gao et al., *Neuron* 48, 635 (2005).
30. S. Dai et al., *Clin. Cancer Res.* 11, 754 (2005).

Contact Us

GL Biochem (Shanghai) Ltd.
Address: 519 Zi Yue Road, Shanghai 200241, China
Tel: 86-21-61263333
Email: glsyn@mail.online.sh.cn

Zipcode: 200241
Fax: 86-21-61263300
Website: www.glschina.com, www.glschina.com

Address: 519 Zi Yue Road, Shanghai 200241, China
Tel: 86-21-61263333
E-mail: glsyn@mail.online.sh.cn
Website: www.glschina.com

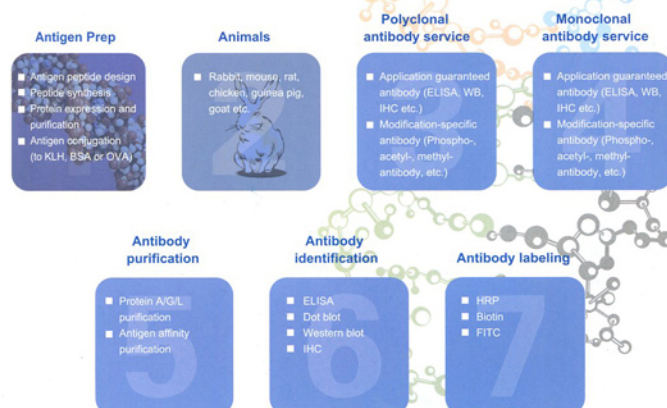


Introduction to GL Biochem Ltd and its Antibody Service

With 350,000 square feet of production space, 50,000 square feet of R&D center and 5,000 square feet of cGMP workshop, GL Biochem Ltd is a world-leading supplier of peptide reagents and antibodies. GL is one of the largest OEM suppliers of antibody vendors in North America and Europe. Our custom antibody services include design and synthesis of antigen peptide, protein expression and purification, custom polyclonal and monoclonal antibody production, purification and labeling of antibody. We have generated antibodies for various applications, including ELISA, WB, IP, IHC and flow cytometry. With help from our greatest scientists, GL is the best choice for your scientific research.



Featured Custom Antibody Services



Address: 519 Zi Yue Road, Shanghai 200241, China
Tel: 86-21-61263333
E-mail: glsyn@mail.online.sh.cn
Website: www.glschina.com

GL BIOCHEM, founded in 1998, is specializing in peptide reagents, generic peptides, custom peptides and providing various peptide products and services for pharmaceutical companies, biotechnology companies and institutes worldwide. GL Biochem has the world class and most sophisticated equipment such as MS, NMR, FT-IR, UV, Polarimeter, Elemental Analyzer, Karl Fischer Titrator, Amino Acid Analyzer, Ion Chromatography, Gas Chromatography, Multi-channel Peptide Synthesizer, Microwave Peptide Synthesizer just to name a few. We have 5 manufacturing bases globally and 12 offices in all major countries around the world. We presently employ over 1,200 staff.

GL Biochem has a total of 350,000 squares feet of production space, 50,000 squares feet of R&D center and 10,000 squares feet of cGMP workshop. Over 50% staffs are directly involved in peptide synthesis. We continuously improve production quality and capability, and at the same time emphasize on technology advancement.

GL Biochem is the global leader in Peptide Products and Custom Peptide Synthesis.

For more information about GL Biochem, Please visit
www.glbiochem.com

Featured Products

- N-Protecting Reagents
- Peptide Coupling Reagents
- Linkers for Solid Phase Synthesis
- Amino acids and their Derivatives
- Fmoc-, Boc-, CBZ-protected amino acids
- Unusual Amino Acids
- N-Methyl Amino Acids
- Amino Alcohol
- Fmoc-protected amino acids attached to Wang Resin
- Amino Acid derivatives attached to 2-Chlorotrityl chloride resin
- Catalogue Peptides

Featured Services

- Custom Peptide Synthesis
- Custom Antibody Production Services
- Contract Manufacturing Services

One of the world's leading peptide raw material and peptide manufacturers

Peptide Reagent and Building Block

- ★ Amino acids derivatives used in Boc-chemistry synthesis strategy: Boc-Arg(NO₂)-OH, Boc-Asn (Trt)-OH, Boc-His(Tos)-OH, Boc-His(Z)-OH, Boc-Tyr (2-Br-Z)-OH etc.
- ★ Amino acids derivatives used in Fmoc-chemistry synthesis strategy: Fmoc-Asp(OtBu)-OH, Fmoc-Cys (Acm)-OH, Fmoc-Glu(OtBu)-OH, Fmoc-His (Trt)-OH, Fmoc-Pen(Trt)-OH etc.
- ★ Z-amino acids and derivatives: Z-Asp(OtBu)-OH, Z-Lys (Boc)-OH, Z-D-Pro-OH, Z-Trp-OBzl , etc.
- ★ Amino Alcohols: D-Alaninol, L-Alaninol, Fmoc-Aspartimol(OtBu), Boc-Tyrtophanol, etc.
- ★ Fmoc-Amino Acids Attached to Wang Resin: Fmoc-Ala-Wang resin, Fmoc-Arg(Pbf)-Wang resin , Fmoc-Glu(OtBu)-Wang resin, Fmoc-His(Trt)-Wang resin, etc.
- ★ Other reagent: AMC, D-Biotin , DMAP , HOSu , etc

Bulk Amino acids: Various L-, DL- and D- form amino acids (D-Tryptophan, D-Valine, D-Alanine, D-Lysine, D-Glutamic acid, D-Arginine and etc) complying to USP and JP guidelines

For bulk quantities, GL Biochem is especially recommended.



GL Biochem Specialized in this Product lines:

- ★ Peptide Coupling reagents : BOP reagent , CDI, DCC, EDC·HCl , HBTU, HOAt , HOBt(anhydrous), HCTU, Cl-HOBt, TOTU, PyBOP, TATU, TBTU etc
- ★ Protecting reagents: 9-Fluorenylmethanol, Boc Anhydride, Boc-ON, CBZ-OSu (Z-OSu) , DMT-Cl , DSC , Fmoc-Cl , Fmoc-NH₂, Fmoc-OSu , tert-Butyldimethylsilyl Chloride , Trityl Chloride etc
- ★ Linkers for solid phase synthesis: DHP Linker, HMP Linker, Rink Amide Linker, Sieber Linker, Weinreb Linker etc
- ★ Unusual Amino Acids: Boc-3-(1-Naphthyl)-D-Alanine, Fmoc-3-(1-Naphthyl)-Alanine, H-Cit-OH, H-HomoArg-OH , Fmoc-HomoArg-OH, Fmoc-fluoro-D-Phenylalanine HCl , 4-NO₂-D-Phenylalanine, Fmoc-Dap(Boc)-OH, etc.
- ★ N-Methyl Amino Acids: Boc-D-N-Me-Ala-OH, Fmoc-N-Me-Asp(OtBu)-OH , Fmoc-N-Me-Phg-OH , Fmoc-N-Me-Tyr(tBu)-OH , etc .
- ★ Phospho amino acids: Fmoc-Ser(HPO₃Bzl)-OH, Fmoc-Thr(HPO₃Bzl)-OH, Fmoc-Tyr(HPO₃Bzl)-OH

For GL additional thousands of products made in house, please email to: info@glbiochem.com

GL Biochem Product Highlight

- D-Tyr (in bulk quantity)
- D-Arg (in bulk quantity)
- D-His (in bulk quantity)
- D-Trp (in bulk quantity)
- HBTU
- Fmoc-OSu
- DMT-Cl (4,4'-Dimethoxy trityl Chloride)
- EDC·HCl



Worldwide Contacts

Head Office

Add: 519 Zi Yue Road, Shanghai 200241, China
Tel: 86-21-61263333
Fax: 86-21-61263300
Email: info@glbiochem.com

Canada

Mr. Gregory Vukson
Add: 6-250 Dundas St S., Suite 183, Cambridge On Canada
Tel: 1-519-212-5585
Email: greg@glbiochem.info
Skype: gregjames1219

United States (U.S.)

Dr. June Xie
Add: 9 Appleton Street, Unit #405, Boston, MA 02116, USA
Tel: 1-617-407-9273
Fax: 1-877-GLBIOCH (452-4624)
Email: glboston@glbiochem.com

Europe

Ms. Athena Luo
Add: 2 Spinners Wynd Dundee, Scotland, UK
Tel: +44-7533130293
Email: lzm@glchina.com
Skype: athena_luo



GL Biochem

www.glbiochem.com
Online Chat Available 24/7



GL Biochem (Shanghai) Ltd.