

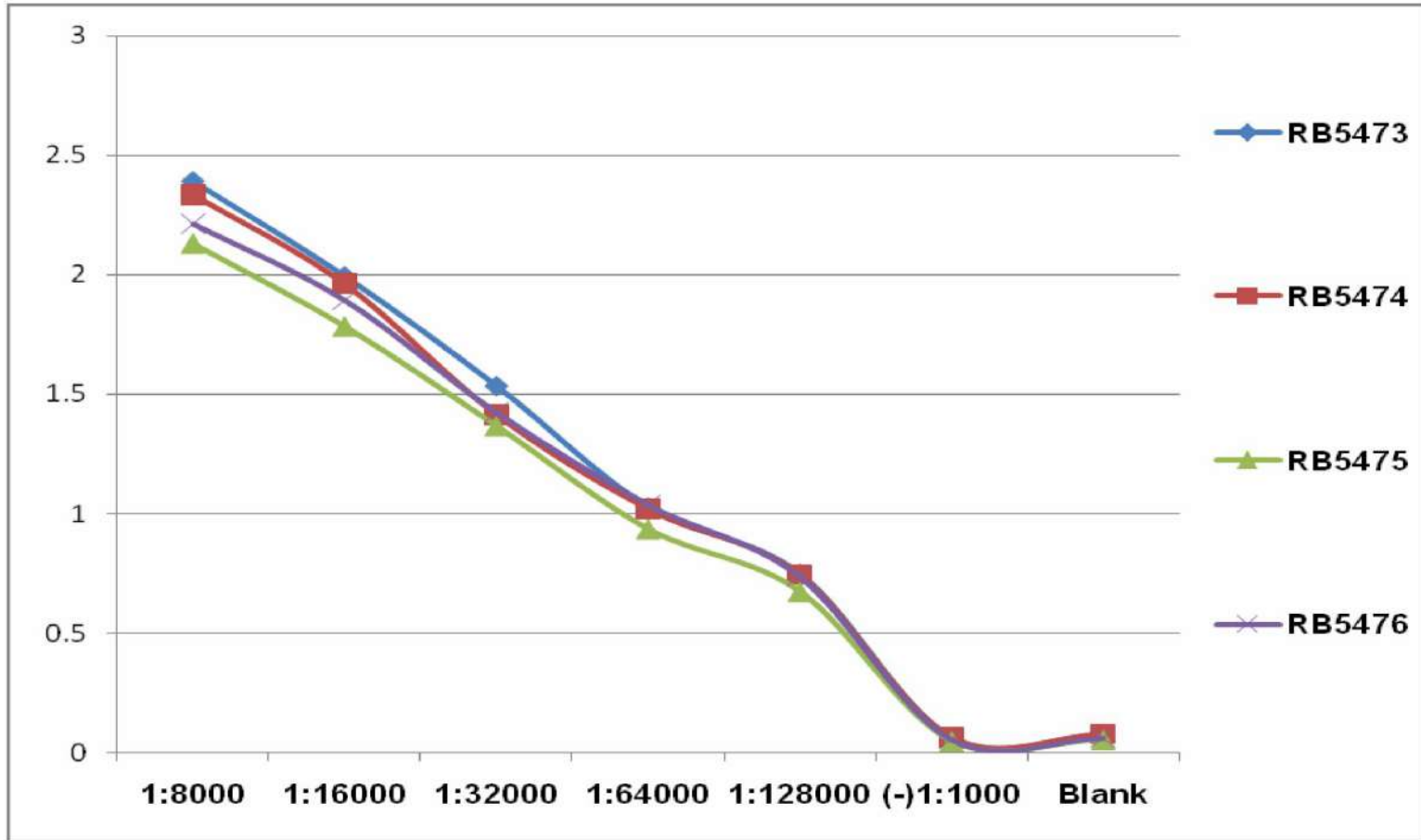
# Polyclonal Antibody Project Report

## 1. Project Data:

<b>Date:</b>	2014-9-25			
<b>Order ID:</b>	#SA140000			
<b>Product ID:</b>	A006153	A006154		
<b>Antibody Name:</b>	ARH-RNASEH1-1	ARH-RNASEH1-2		
<b>Lot #:</b>	A140618-QL2686	A140618-QL2687		
<b>Peptide sequence:</b>	CADRLAREGAEGAED	RRGRKTGVFLTFLTC		
<b>Peptide ID:</b>	403840	403841		
<b>Animal ID:</b>	RB5473	RB5474	RB5475	RB5476
<b>Concentration:</b>	0.49mg/ml	0.42mg/ml	0.38mg/ml	0.44mg/ml
<b>Volume:</b>	5ml (before lyophilization)	5ml (before lyophilization)	6ml (before lyophilization)	6ml (before lyophilization)
<b>Reconstitution:</b>	<p>If you receive antibody in solution, it is in PBS with 0.02% NaN<sub>3</sub> buffer. Aliquot upon receiving to minimize freeze/thaw cycles. If you receive antibody in lyophilized powder, it is in PBS with 0.02% NaN<sub>3</sub> buffer before lyophilization.</p> <p><b>Reconstitution for lyophilized antibodies:</b></p> <ol style="list-style-type: none"> <li>1. Test solubility on a small aliquot first.</li> <li>2. Most samples can be well dissolved in distilled water alone and gentle agitation will help. Please follow the following steps for solubility test: <ol style="list-style-type: none"> <li>1. Add distilled water to reconstitute the lyophilized products and mix gently by inverting 5-6 times at room temperature.</li> <li>2. It may take a few minutes to reconstitute a lyophilized product. If insoluble particles are observed, remove particles by centrifugation at 3000 rpm or higher for 10-15 min, transfer supernatant to a fresh tube.</li> <li>3. If the antibody aliquot cannot be dissolved in water (cloudy solution), try adding 8M Urea drop by drop but no more than 20% of final concentration (v/v). Sonication can be tried if needed.</li> <li>4. If the antibody aliquot cannot be dissolved in water along with 8M Urea - Take a new fresh small aliquot, add DMSO drop by drop, then water. DMSO shall be no more than 10% of final concentration (v/v).</li> </ol> </li> <li>3. For lyophilized antibodies, reconstitute to a final antibody concentration according to your applications or the recommended concentration on the report sheet. For lyophilized antisera or preimmune sera, reconstitute to the original volume as described on the report.</li> </ol> <p>**Please note: no solubility test has been performed on the peptides</p>			
<b>Storage:</b>	<p>The reconstituted antibody can be stored for 2-3 weeks at 2-8°C or for up to 12 months at -20°C or below. Aliquot to minimize freeze/thaw cycles. Lyophilized product remains stable for at least one year if stored at -20°C or below. Antibody at working concentration should be made and used the same day.</p>			

**2. Identification Data:**

**Elisa:**



Animal ID	Blank	(-) 1:1000	SA 1:8000	SA 1:16000	SA 1:32000	SA 1:64000	SA 1:128000
RB5473	0.075	0.065	2.391	1.994	1.535	1.027	0.75
RB5474	0.077	0.063	2.335	1.961	1.414	1.019	0.743
RB5475	0.055	0.049	2.128	1.782	1.366	0.935	0.674
RB5476	0.062	0.056	2.213	1.893	1.424	1.038	0.737

(-): negative serum                      1: 1000    OD<0.2  
 SA: Antigen affinity purified antibody    1:32000    OD>1.0  
 ELISA Titer >1:32000

**Intended Use**

This product is intended for research use only. It is not for any human or animal diagnostic and therapeutic use.